

**Ultimate - Multi-Touch Performance**



**KIP 7170**

# KIP 7170 INFINITE POSSIBILITIES

## KIP 7170 MULTI-FUNCTION SPACE SAVING SYSTEM

The productivity of the KIP 7170 system is designed to satisfy the most demanding needs of decentralized users. The versatile KIP 7170 may also be expanded to provide multifunction convenience. KIP 7170 system software is ideal for decentralized environments and expandable to meet the need for centralized printing.



### Smart Multi-Touch Control

- 12.1" smart multi-touch display
- Touch simplicity: swipe, rotate, pinch, spread & tap
- Intuitive, tablet style touch controls
- Uniform operations for improved experience
- Walk-up operator convenience
- High demand productivity
- View and print area of interest

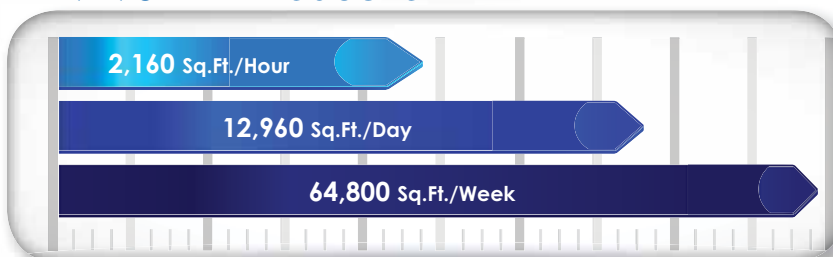


### System Features

- Single footprint configuration
- Color touch controls
- Integrated top stacking
- 2 integrated media rolls
- 6 'D' / 'A1' size prints per minute
- 600 X 2400 dpi print, copy & scan
- High definition print technology
- Print from & scan to the cloud
- CIS scanning technology - with real-time thresholding technology
- Rear delivery for high production
- Smart eco<sup>2</sup> design



### KIP 7170 Print Production



### Integrated USB Drives

KIP 7170 systems eliminate the need for additional PC hardware by printing documents directly from the touchscreen software. Integrated support for removable media such as standard USB drives provides the ability to securely print documents directly from a range of media formats.

## KIP 7170 PRODUCTION SYSTEM WITH STACKING

KIP's stackers include advanced intelligent online systems that suit your exact needs, while maintaining the flexibility to grow as demands increase. Operators have the flexibility to direct prints and copies to a preferred destination – the front delivery stacking system or a rear system for increased production.



### MULTI-TASKING

- Direct prints to stack on top or rear
- Create color copies directly to inkjet printers
- Scan to a wide range of file formats
- Real time copy and scan previews
- USB printing and scanning support
- On screen copy, print & scan previews



## KIP 7170 PRODUCTION SYSTEM WITH FOLDING

The KIPFold 1000 and KIPFold 2000 finishing systems automate wide-format document finishing by providing folding, stacking and collation in a compact design.

### SUPERIOR PRODUCTIVITY

- Precision document folding
- Operates at full print engine speed
- Ultra-quiet operation
- Online and offline folding
- Fully integrated with KIP software
- Compact footprint





## SMART SOLUTIONS



### Smart Multi-Touch Controls

- One touch access to system features in 25 languages
- Instantaneously responsive 12" color display
- Intuitive feature selection for easy operation



### Comprehensive Software Apps

- Print management suite synergy
- Functional continuity across all kip applications
- All available for free download from [www.kip.com](http://www.kip.com)



### Mobile Cloud Convenience

- Use any phone, tablet, laptop or pc
- No need to install drivers or software applications
- Integrated with SkyDrive, Google Drive, Dropbox

The space saving design of the KIP 7170 provides near-wall operation and is expandable as production demands increase.

- Ultimate in advanced technology and versatility
- Superior image quality and reliable performance
- Sustainable benefits and cost effective operations
- Designed to deliver exceptional value



### Space Saving Design

- Easy operator access
- Next to wall installation
- Innovative top stacking system



### Integrated Production Systems

- Fully integrated folding & stacking
- Easy print set handling & distribution
- Two way communications for intelligent operation



### Eco Friendly System

- 97% product recyclability
- 100% toner efficient - no waste toner
- Promotes environmental health & sustainability

# KIP COLOR MULTI-TOUCH SO EASY TO USE

All system functions of the KIP 7170 are performed through its large, multi-touch 12" display with vivid color controls that instantly respond to your touch. The high resolution display provides copy and scan previews with single pixel clarity, allowing you to instantly view b&w and color documents like never before.



## A Smart, Intuitive Interface

The integrated color multi-touch display of KIP systems provides a powerful combination of control plus convenience – because you don't have to leave your printer to perform the command functions that make your work more productive.

The articulating display provides the perfect viewing angle to select features, control job queues, review system status, print image files or scans – and get a large, full color look at image files before you print, make changes and see your results immediately.



*Zoom In and out with multi-touch controls*



*Scan, copy and print using the integrated touchscreen*



*Create color scans and copy to color inkjet and KIP Printers*

## Easy to Use

- Color multi-touch controls
- Unlimited presets/templates
- Illustrated operator guides
- KIP cost review application
- KIP track system
- Print queue management

## Powerful B&W Imaging

- View & print from touchscreen
- Concurrent print & scan to file
- Collated set printing
- Scale to page size
- Fold pattern selection
- Auto rotation for media saving

## Color Copy & Scan

- Vivid image previews
- ICC profile color management
- Area of interest scan/copy
- Scan to email, usb or cloud
- Full integration with Skydrive
- Closed loop color calibration

# TOTAL PRINT MANAGEMENT APPLICATIONS INCLUDED WITH KIP 7170 SYSTEMS



## Total Print Management

KIP software apps are the most complete solution designed specifically for b&w and color wide format document management. The modular design of KIP software apps enable print job creation and submittal via a web browser, PC/Mac, iPad or KIP touchscreen. Each KIP application has new features that deliver significant productivity gains, strict security standards, increase operational efficiency and provide cost controls for prints, copies and scans of any type.

## KIP Certified Drivers

- Windows device experience certified driver
- Certified AutoCAD print driver
- 32 & 64 bit operating system compatibility
- Fast data spooling
- Data tracking for job accounting



*KIP color touchscreen with multi-touch controls*

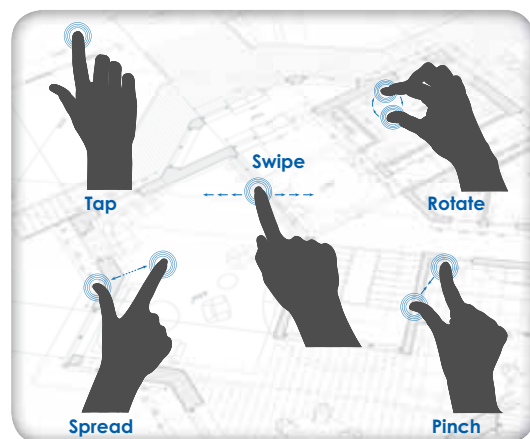
## Multi-Touch Productivity

Experience the difference of KIP multi-touch technology.

- Vivid 12" color multi-touch display
- Fully articulating to adjust viewing angle
- Centralized access to all system features
- Print, copy and scan in b&w or full color
- Swipe, pinch, spread and rotate view
- Zoom to area of interest and print
- Print directly from removable usb drives and system mailboxes
- Job queue management
- Network security features
- Integrated accounting system
- Concurrent print & scan to file at the touchscreen display
- Integrated print previews of each file in a complete job set

## Super-View Image Control

The high resolution multi-touch screen provides copy, scan and print previews, allowing you to instantly view b&w and color images. Multi-touch controls allow you to zoom, rotate and pan the image preview.



*Intuitive, tablet style touch controls*



*Intuitive ribbon style interface*

## KIP Print

- Intuitive ribbon style interface
- Advanced print job controls
- Thumbnail black & white and color file viewing
- Comprehensive preflight controls
- Enhanced file & image adjustments
- Easy drag and drop functionality
- Integrated folding system controls
- Accounting & security features
- Automated batch file format conversion



*Browser based printing  
pc & mac compatible*

## KIP PrintNET

- Browser based viewing & printing
- Operating system independent
- Print collated sets of unlimited files
- Printer configuration and admin
- Full job accounting & email reporting



*Available in the  
Apple iTunes store*

## iPad App: KIP iView & iPrint

- View & print files on iPad
- Print PDF, TIFF, PLT, DWF, JPEG
- Scaling, media & folding settings
- View & manage print queues
- Connect up to 5 KIP printers



*Accessible from KIP touchscreen*

## KIP Cloud Connect

- Use the cloud service of your choice
- Print from the cloud
- Scan to the cloud
- Print files via email attachments
- Integrated with SkyDrive, Google Drive, Dropbox



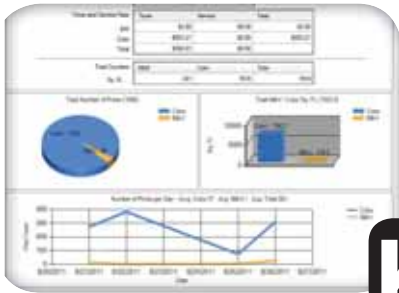
*Quickly review the media,  
toner and printer status*

## KIP Printer Status

Provides system information including:

- Online or offline
- Open covers
- Consumables status
- Operational status
- Current print meter readings

# KIP SYSTEM INFORMATION APPLICATIONS INCLUDED WITH KIP 7170 SYSTEMS



*Calculate print cost with detailed reports*

## KIP Cost Review Application

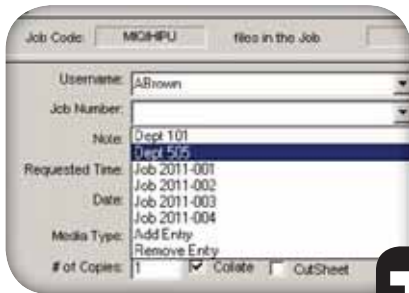
- Cost reporting by square foot, job or user
- Toner coverage reports
- Total printing reports
- Toner & maintenance cost report
- Customizable reports by user, project or department
- Search function customizable fields for info tracking



*On demand illustrated operator guides*

## KIP System Guides

- Displayed on KIP touchscreen
- Information presented in full color
- Step-by-step pictorial instructions
- B&w and color copy and scan-to-file instructions
- Media & toner replacement procedures
- Quick reference resource for system functions



*KIP Track System ensures all work is charged to the appropriate user, department or project*

## KIP Track System

- Accounts for copy/print/scan use
- Password protect data entries
- Email reports generated weekly, monthly or on-demand
- Fully integrated with all KIP systems & apps



*Designed to make it easy for operators to contact the KIP customer care provider*

## Information Center

- KIP authorized service provider information
- Direct access to service provider website
- Assists with consumable orders
- Provides current meter information



# KIP 7170 EXCLUSIVE TECHNOLOGIES

## HIGH DEFINITION PRINT (HDP) TECHNOLOGY

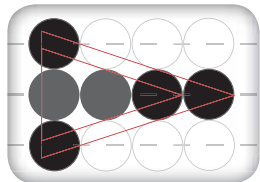
KIP HDP is a green technology that is 100% toner efficient, reducing the cost of printing and returning outstanding value and industry leading low cost of ownership. KIP systems do not employ carriers, developers or waste receptacles that require disposal and replacement.



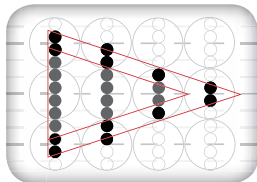
*100% toner efficiency*

## 600 x 2400 DPI– High Resolution

KIP systems feature crisp, 600 x 2400 dpi printing for sharper details and extremely smooth grayscales. This higher resolution allows the system to enhance curves, diagonal lines and arcs by smoothing out line edges with excellent precision.



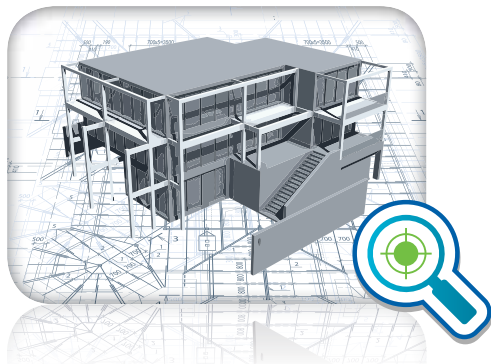
*600 dpi x 600 dpi*



*600 dpi x 2400 dpi*

## Consistent Print Quality

KIP systems deliver solid blacks, smooth grayscale and uniform print quality from the first to the last page of a print job. Advanced technologies including automatic environmental adjustments and contact-based developer units keep your print quality on track through seasonal climate changes.



## Media Capacity

KIP systems feature auto-switching media drawers to ensure non-stop print production and maximum media versatility. Media status is illustrated on the touchscreen. KIP systems feature a user friendly "End Cap" design for easy loading of media rolls.



*End caps for easy changing of media rolls*

## Accurate Print Sets

KIP Systems provide precise cut lengths that conform to KIP sheet size specifications. Electronic monitoring of media while printing provides an accurate page cut length. Print jobs are produced at an identical sheet size, resulting in a professional presentation.



*KIP precision cutting for accurate sheet sizes*

# KIP 7170

## SCANNING SYSTEM

# KIP 7170

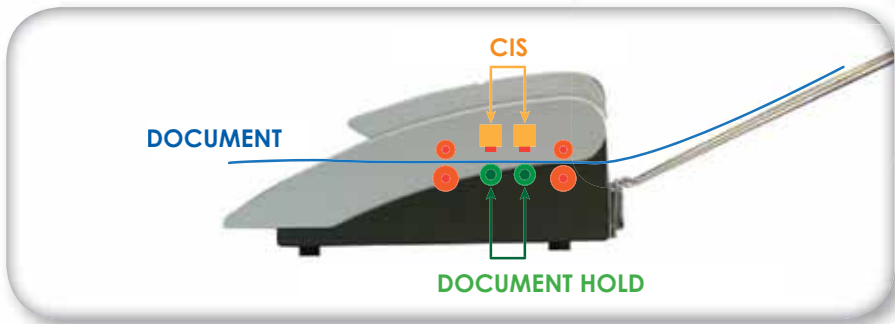
## SYSTEM OPTIONS

### KIP 7170 INTEGRATED CIS SCANNING SYSTEM

The KIP 7170 integrated large format scanner is a 24-bit, 36" / 914mm wide full-color image capture system perfect for processing photographs, complex maps and AEC/ CAD drawings. The CIS (Contact Image Sensor) scanning technology enables high-resolution, high-speed image capture with energy saving operation from a compact design.

### System Features

- Create color copies directly to inkjet printers
- Scan to a wide range of file formats
- Real time copy and scan previews
- USB printing and scanning support
- On screen copy, print & scan previews



The KIP 7170 integrated scanner features a support system to enhance feed reliability



Copy & scan documents to the cloud or email and create color copies to up to 3 connected color print systems



Space saving print & original stacking



KIP 1200 high capacity online stacker



KIPFold 1000 compact online fan folder



KIPFold 2000 online fan & cross folder



PDF format printing keycode



Secure hard drive connection kit



### KIPFold 1000

The KIPFold 1000 is a compact but powerful online folder designed to easily, conveniently and quickly fan fold documents with KIP 7170 print systems.

### KIPFold 2000

The KIPFold 2000 system automates wide-format document folding requirements by providing folding, stacking and collation in a compact design. KIP online folders intelligently communicate with KIP printers and are fully integrated with KIP software applications & printer drivers to provide seamless workflow integration.

## KIP 7170 INTEGRATED FOLDING & FINISHING

### DOCUMENT AUTOMATION

KIP integrated folding and finishing systems automate wide-format document finishing by providing folding, stacking and collation in a compact design.



### The Color of KIP is Green

KIP is committed to product designs that promote environmental health and sustainability. KIP's goal is to consistently improve and refine the technologies in products that keep our planet green. KIP considers the total product life cycle - from the manufacturing process to final device disposal in our shared ecosystems.



*KIP systems print on recycled paper*



*Reduced electrical consumption*



# SMART SOLUTIONS - INFINITE POSSIBILITIES

## KIP 7170 MULTIFUNCTION SYSTEMS



KIP 7170 single footprint system with integrated front delivery print tray



KIP 7170 single footprint system with integrated front delivery print tray plus optional rear print stacking tray



KIP 7170 system with optional rear original and print stacking system

## KIP 7170 PRODUCTION SYSTEMS



KIP 7170 system with optional KIP 1200 high capacity print stacker



KIP 7170 system with optional KIPFold 1000 online fan folder



KIP 7170 system with optional KIPFold 2000 online fan & cross folder

[WWW.KIP.COM](http://WWW.KIP.COM)

Email: [info@kip.com](mailto:info@kip.com)

U.S.A. Phone: (800) 252-6793 • Canada Phone: (800) 653-7552

KIP is a registered trademark of the KIP Group. All other product names mentioned herein are trademarks of their respective companies. All product features and specifications are subject to change without notice. Complete product specifications are available upon request. © 2013